

Slide Executive Desktop – Activation

Activating Slide Executive Desktop is very simple. Click on the **Help** menu and then select the **Activate** or **Reactivate** option as shown in figure 1.

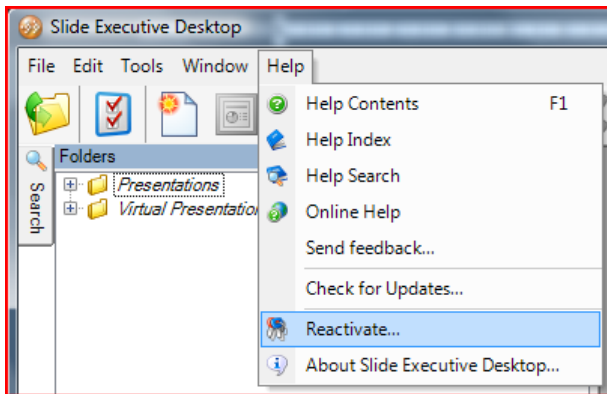


Figure 1

The Activate Slide Executive form will open, click **Forward** to continue.

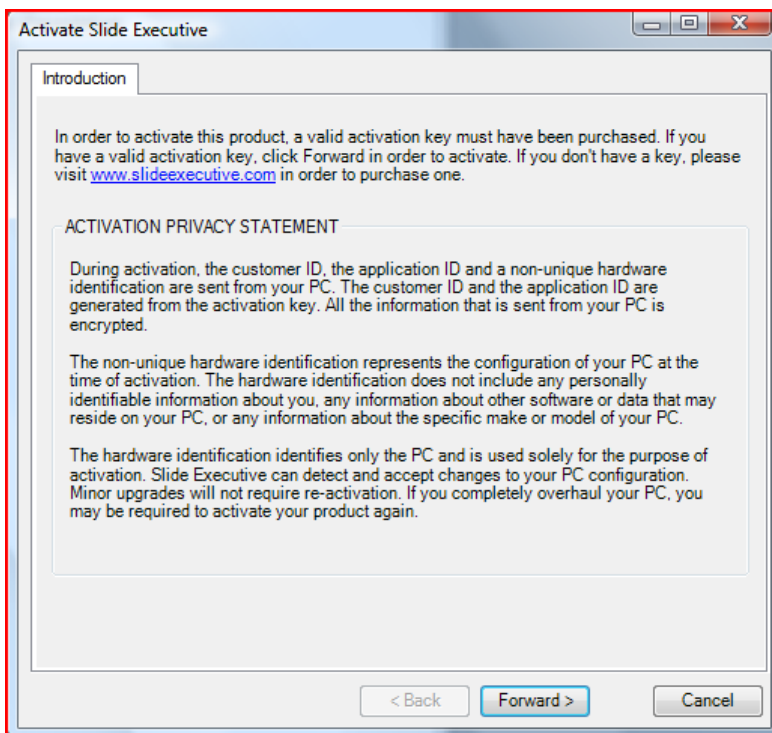


Figure 2

On the **Gather information** tab paste the license key that was sent to you and then click **Forward** according to figure 3.

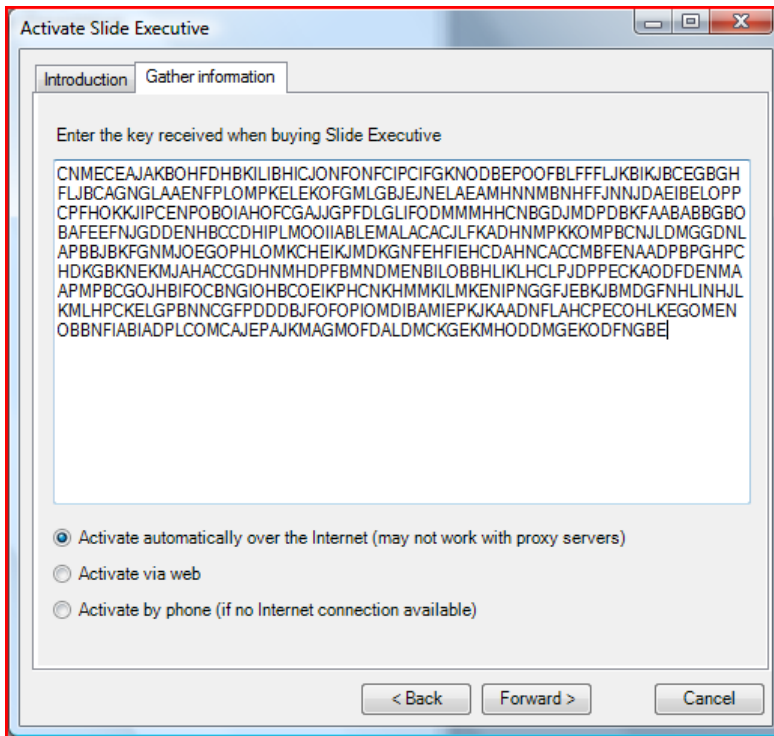


Figure 3

Once the license key has been evaluated by Slide Executive Desktop, click the Activate button. The application will contact the Slide Executive website and register your activation.

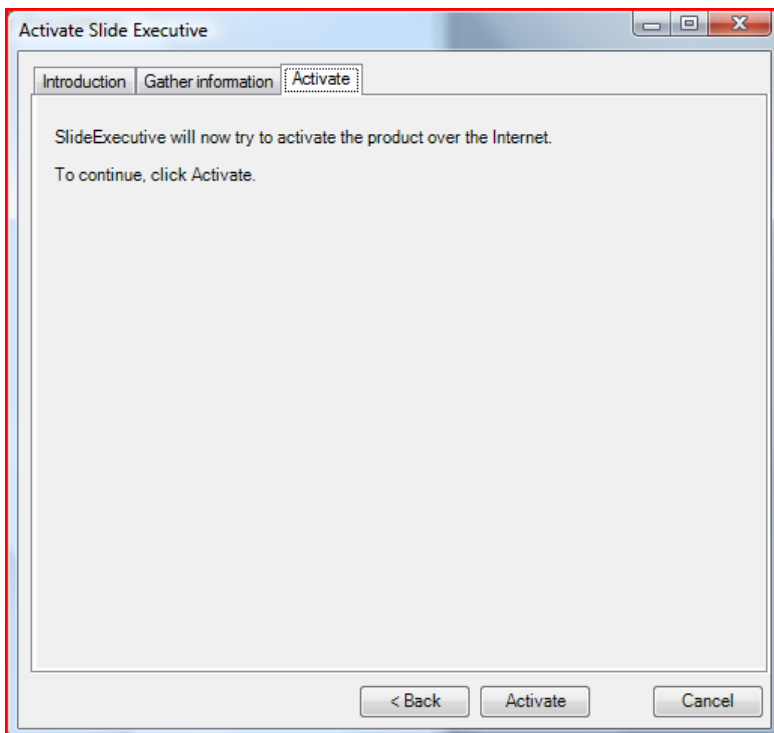


Figure 4